



## Lebensraum Wimpassing Grundstück 3, Haus B

### Eckdaten

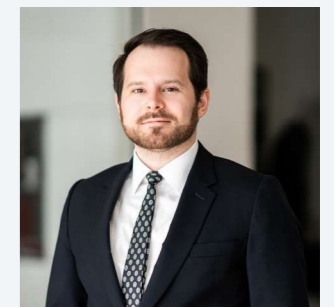
<b>Erdgeschoß</b>	
Vorraum:	3,93 m <sup>2</sup>
Garderobe:	3,47 m <sup>2</sup>
WC EG:	3,09 m <sup>2</sup>
Technik:	2,00 m <sup>2</sup>
Wohnen/Essen/Kochen:	27,46 m <sup>2</sup>
<b>Obergeschoß</b>	
Schlafzimmer:	17,28 m <sup>2</sup>
Zimmer 1:	10,97 m <sup>2</sup>
Bad/WC OG:	5,78 m <sup>2</sup>
Gang:	3,02 m <sup>2</sup>
<b>Wohnfläche Gesamt</b>	
<b>75,00 m<sup>2</sup></b>	
Terrasse:	6,00 m <sup>2</sup>
Garten:	27,00 m <sup>2</sup>
HWB:	E 32 kWh/m <sup>2</sup> a
fGEE:	D 0,59

### Vertrieb

Gabriele Vorderegger



Fabian Vorderegger



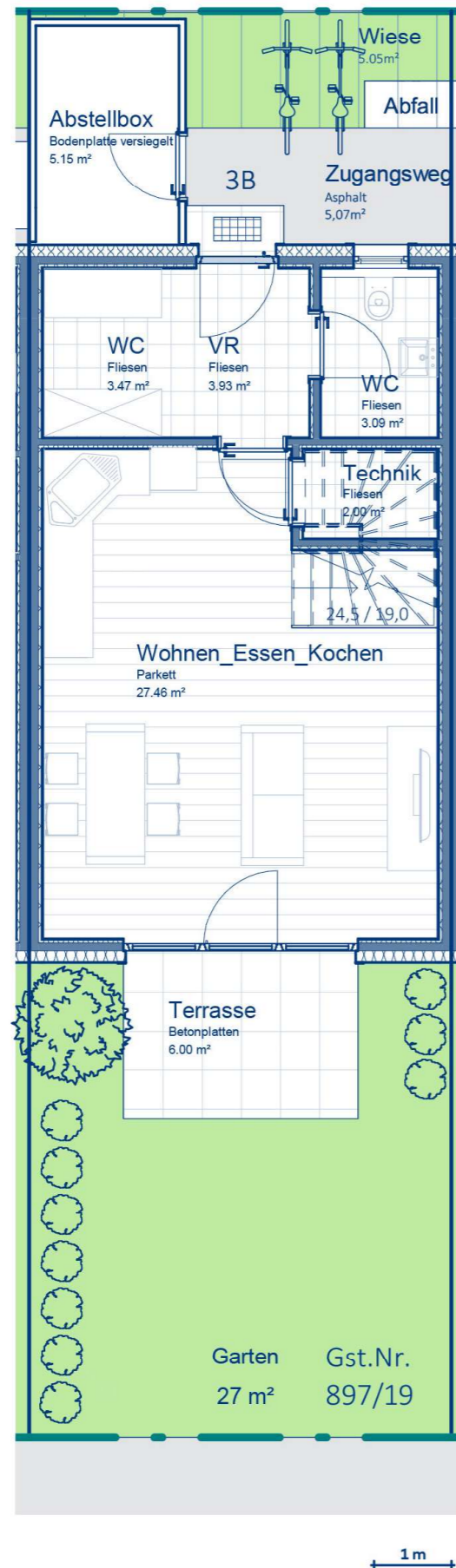
vorderegger developments GmbH

Forellenweg 3  
5020 Salzburg

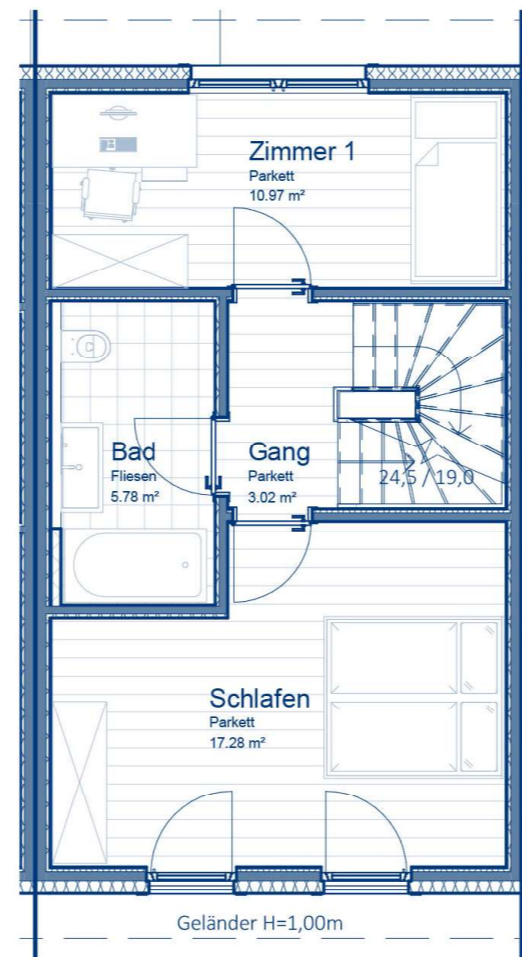
+43 662 455500

office@vorderegger.org

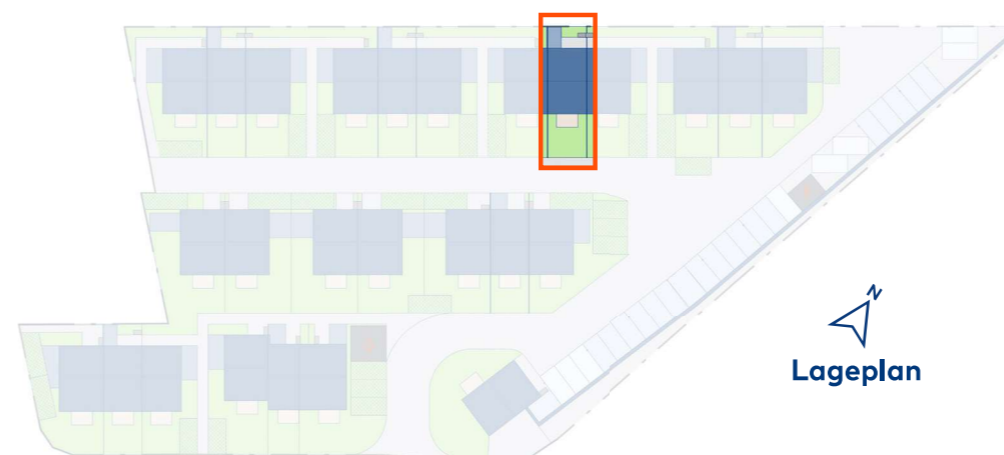
vorderegger.org



Erdgeschoß



1. Obergeschoß



Lageplan